



MODEL. IDS606

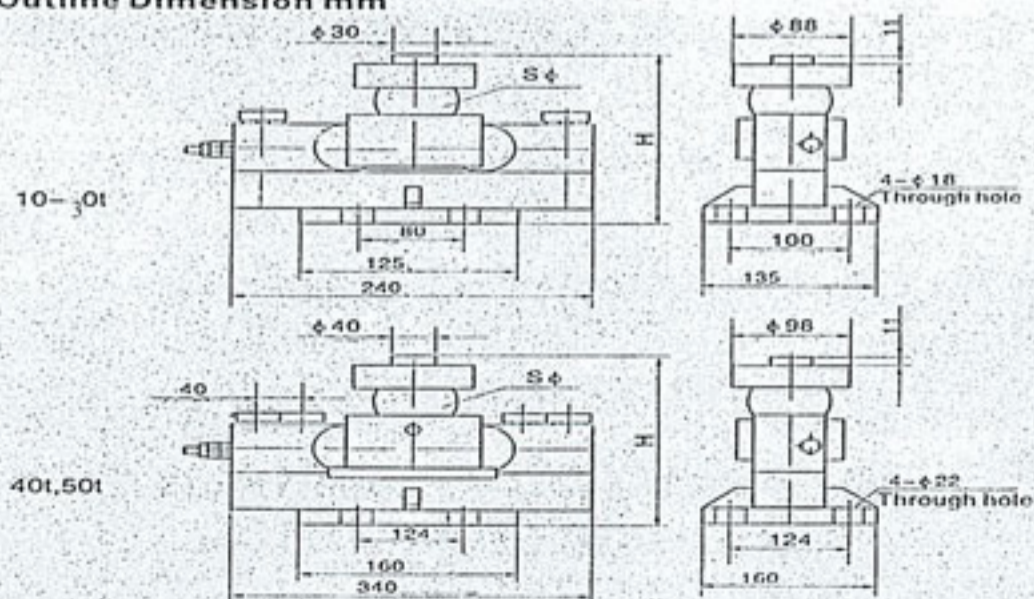
SDS LOAD CELL



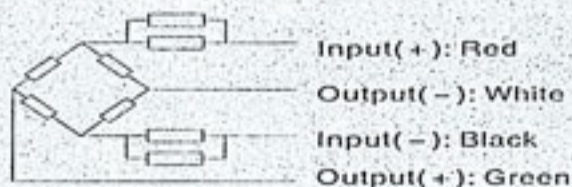
Specification

Capacity	t	10/20/25/30/40/50
Accuracy class		C3
Combined error	V _{min}	E _{max} /7500
Creep	(%FS)	≤ ±0.020
Temperature effect on sensitivity	(%FS/30min)	≤ ±0.016
Temperature effect on zero	(%FS/10°C)	≤ ±0.011
Output sensitivity	(%FS/10°C)	≤ ±0.019
Input resistance	(mv/v)	2.0±0.002
Output resistance	(Ω)	700±7
Insulation resistance	(Ω)	703±4
Zero balance	(MΩ)	≥5000(50VDC)
Temperature, compensated	(%FS)	1.5
Temperature, allowed	(°C)	-10 - +40
Excitation, Recommended	(°C)	-35 - +65
Excitation, Max.	(V)	5 - 12(DC)
Safe overload	(V)	18(DC)
Ultimate overload	(%FS)	120
Corner correction	(%FS)	150

Outline Dimension mm



Capacity Dimension	10t	20t- 30t	40t,50t
H	195	225	267
S φ	50	76	82



Wiring:

- Shielded, 4 conductor cable : φ 5.5mm.
- Standard cable length: 12m.
- Cable type and cable length for customer's own application are available on request.